

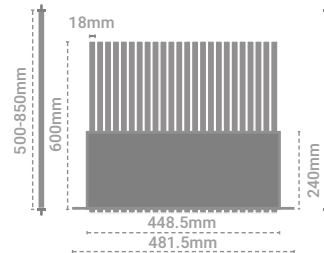
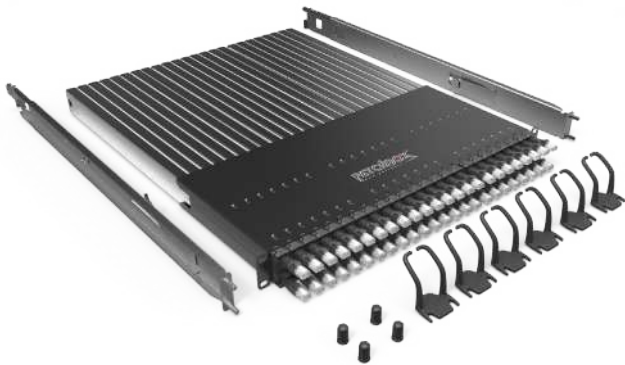
# PATCHBOX Plus<sup>+</sup>

PATCHBOX Simplify IT

Network with  
Confidence

5  
YEAR

WARRANTY



## PATCHBOX PLUS+ SYSTEM STP / UTP

### TECHNICAL SPECIFICATIONS

#### STP CABLE

Cat.6 STP shielded, 250MHz, AWG36,  
100% stranded copper, PVC jacket, 10Gbit ready

#### UTP CABLE

Cat.6 UTP unshielded, 250MHz, AWG30,  
100% stranded copper, PVC jacket, 10Gbit ready

#### CONNECTOR

RJ45 shielded plug, pins gold plated, snagless booted

#### EXTRACTABLE CABLE LENGTH

1.7m covers 26RU

#### FRAME

RAL9005 powder coated steel

#### CASSETTE PROFILES

Stainless steel, laser-welded

#### MOUNTING RAILS

Stainless steel, variable from 500mm to 850mm

#### PLASTIC PARTS

Polyoxymethylene POM

#### OPERATING TEMPERATURE RANGE

+10°C - +45°C

#### AMBIENT HUMIDITY NON-CONDENSING

10% - 95%

#### GROSS WEIGHT

11.86kg

#### PACKAGING DIMENSIONS

590mm x 760mm x 50mm WxDxH

[patchbox.com](http://patchbox.com)

### ITEMS INCLUDED

- 24 x PATCHBOX Plus+ STP / UTP cassette with Cat.6 cable
- 1 x Frame
- 6 x Patchcatch
- 2 x Adjustable mounting rails incl. HEX-Nuts
- 2 x DIN A5 tear-off ID Labels 96 Labels

### STP SHIELDED VARIANTS

PRODUCT CODE	CABLE COLOR
P60STPXC6XX24K	Black
P60STPXC6XX24B	Blue
P60STPXC6XX24G	Green
P60STPXC6XX24R	Red
P60STPXC6XX24Y	Yellow
P60STPXC6XX24W	White

### UTP UNSHIELDED VARIANTS

PRODUCT CODE	CABLE COLOR
P60UTPXC6XX24K	Black
P60UTPXC6XX24B	Blue
P60UTPXC6XX24G	Green
P60UTPXC6XX24R	Red
P60UTPXC6XX24Y	Yellow
P60UTPXC6XX24W	White

PATCHBOX

# PATCHBOX Plus<sup>+</sup>

PATCHBOX Simplify IT

Network with  
Confidence

5  
YEAR

WARRANTY



## PATCHBOX PLUS+ LONG RANGE SYSTEM - STP / UTP

### TECHNICAL SPECIFICATIONS

#### STP CABLE

Cat.6 STP shielded, 250MHz, AWG36, 100% stranded copper, PVC jacket, 10Gbit ready

#### UTP CABLE

Cat.6 UTP unshielded, 250MHz, AWG30, 100% stranded copper, PVC jacket, 10Gbit ready

#### CONNECTOR

RJ45 shielded plug, pins gold plated, snagless booted

#### EXTRACTABLE CABLE LENGTH

1.7m extractable / 1m over length non-retractable, covers 48RU from mid-mid

#### FRAME

RAL9005 powder coated steel

#### CASSETTE PROFILES

Stainless steel, laser-welded

#### MOUNTING RAILS

Stainless steel, variable from 500mm to 850mm

#### PLASTIC PARTS

Polyoxymethylene POM

#### OPERATING TEMPERATURE RANGE

+10°C - +45°C

#### AMBIENT HUMIDITY NON-CONDENSING

10% - 95%

#### GROSS WEIGHT

13.95kg

#### PACKAGING DIMENSIONS

590mm x 760mm x 150mm WxDxH

[patchbox.com](http://patchbox.com)

### ITEMS INCLUDED

- 24 x PATCHBOX Plus+ STP / UTP Long Range cassette with Cat.6 cable
- 1 x Frame
- 6 x Patchcable
- 2 x Adjustable mounting rails incl. HEX-Nuts
- 2 x DIN A5 tear-off ID Labels 96 Labels

### STP SHIELDED VARIANTS

PRODUCT CODE	CABLE COLOR
P60STPXC6XX33K	Black
P60STPXC6XX33B	Blue
P60STPXC6XX33G	Green
P60STPXC6XX33R	Red
P60STPXC6XX33Y	Yellow
P60STPXC6XX33W	White

### UTP UNSHIELDED VARIANTS

PRODUCT CODE	CABLE COLOR
P60UTPXC6XX33K	Black
P60UTPXC6XX33B	Blue
P60UTPXC6XX33G	Green
P60UTPXC6XX33R	Red
P60UTPXC6XX33Y	Yellow
P60UTPXC6XX33W	White

PATCHBOX

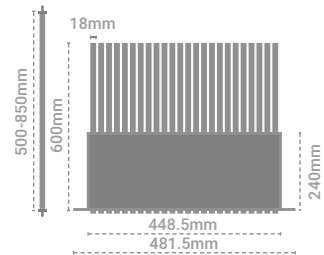
# PATCHBOX Plus<sup>+</sup>

PATCHBOX Simplify IT

Network with  
Confidence

5  
YEAR

WARRANTY



## PATCHBOX PLUS+ SYSTEM OS2 / OM4

### TECHNICAL SPECIFICATIONS

#### OS2 CABLE

OS2 RBS 9 $\mu$ /125 $\mu$ , G.657.A1, LSZH, Yellow OM4

#### CABLE

OM4 RBS 50 $\mu$ /125 $\mu$ , LSZH, Erika Violet

#### CONNECTOR

LC Duplex - LC Duplex / LC Duplex - SC Duplex; others on request minimum order size: 10 boxes

#### EXTRACTABLE CABLE LENGTH

1.7m covers 26RU

#### FRAME

RAL9005 powder coated steel

#### CASSETTE PROFILES

Stainless steel, laser-welded

#### MOUNTING RAILS

Stainless steel, variable from 500mm to 850mm

#### PLASTIC PARTS

Polyoxymethylene POM

#### OPERATING TEMPERATURE RANGE

+10°C - +45°C

#### AMBIENT HUMIDITY NON-CONDENSING:

10% - 95%

#### GROSS WEIGHT

11.86kg

#### PACKAGING DIMENSIONS

590mm x 760mm x 50mm WxDxH

[patchbox.com](http://patchbox.com)

### ITEMS INCLUDED

- 24 x PATCHBOX Plus+ OS2 / OM4 cassette with LC-LC / LC-SC connector
- 1 x Frame
- 6 x Patchcatch
- 2 x Adjustable mounting rails incl. HEX-Nuts
- 2 x DIN A5 tear-off ID Labels 96 Labels

### OS2 VARIANTS

PRODUCT CODE	CONNECTOR TYPE
P60SMAOS21124Y	LC-LC
P60SMAOS21224Y	LC-SC

### OM4 VARIANTS

PRODUCT CODE	CONNECTOR TYPE
P60MMAOM41124E	LC-LC
P60MMAOM41224E	LC-SC

PATCHBOX

# PATCHBOX Plus<sup>+</sup>

PATCHBOX Simplify IT

Network with  
Confidence

5  
YEAR

WARRANTY



## PATCHBOX PLUS+ LONG RANGE SYSTEM - OS2 / OM4

### TECHNICAL SPECIFICATIONS

#### OS2 CABLE

OS2 RBS 9µ/125µ, G.657.A1, LSZH, Yellow

#### OM4 CABLE

OM4 RBS 50µ/125µ, LSZH, Erika Violet

#### CONNECTOR

LC Duplex - LC Duplex / LC Duplex - SC Duplex; others on request minimum order size: 10 boxes

#### EXTRACTABLE CABLE LENGTH

1.7m extractable / 1m over length non-retractable, covers 48RU from mid-mid

#### FRAME

RAL9005 powder coated steel

#### CASSETTE PROFILES

Stainless steel, laser-welded

#### MOUNTING RAILS

Stainless steel, variable from 500mm to 850mm

#### PLASTIC PARTS

Polyoxymethylene POM

#### OPERATING TEMPERATURE RANGE

+10°C - +45°C

#### AMBIENT HUMIDITY NON-CONDENSING

10% - 95%

#### GROSS WEIGHT

13.95kg

#### PACKAGING DIMENSIONS

590mm x 760mm x 150mm WxDxH

[patchbox.com](http://patchbox.com)

### ITEMS INCLUDED

- 24 x PATCHBOX Plus+ OS2 / OM4 Long Range cassette with LC-LC / LC-SC connector
- 1 x Frame
- 6 x Patchcatch
- 2 x Adjustable mounting rails incl. HEX-Nuts
- 2 x DIN A5 tear-off ID Labels 96 Labels

### OS2 VARIANTS

PRODUCT CODE	CABLE COLOR
P60SMAOS21133Y	LC-LC
P60SMAOS21233Y	LC-SC

### OM4 VARIANTS

PRODUCT CODE	CABLE COLOR
P60MMAOM41133E	LC-LC
P60MMAOM41233E	LC-SC

PATCHBOX

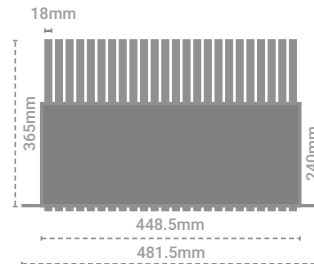
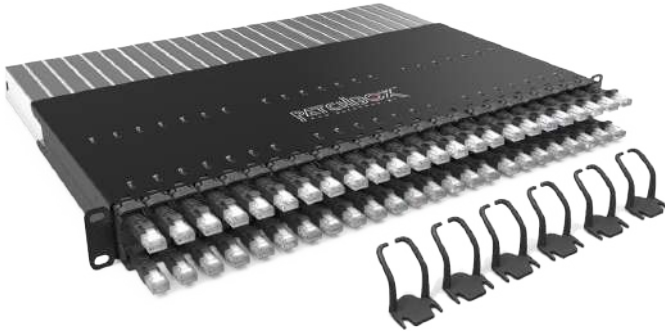
# PATCHBOX 365

PATCHBOX Simplify IT

Network with  
Confidence

5  
YEAR

WARRANTY



## PATCHBOX 365 SYSTEM STP / UTP

### TECHNICAL SPECIFICATIONS

#### STP CABLE

Cat.6 STP shielded, 250MHz, AWG36,  
100% stranded copper, PVC jacket, 10Gbit ready

#### UTP CABLE

Cat.6 UTP unshielded, 250MHz, AWG30,  
100% stranded copper, PVC jacket, 10Gbit ready

#### CONNECTOR

RJ45 shielded plug, pins gold plated, snagless booted

#### EXTRACTABLE CABLE LENGTH

0.8m covers 10RU

#### FRAME

RAL9005 powder coated steel

#### CASSETTE PROFILES

Stainless steel, laser-welded

#### PLASTIC PARTS

Polyoxymethylene POM

#### OPERATING TEMPERATURE RANGE

+10°C - +45°C

#### AMBIENT HUMIDITY NON-CONDENSING

10% - 95%

#### GROSS WEIGHT

8.6kg

#### PACKAGING DIMENSIONS

590mm x 760mm x 50mm WxDxH

[patchbox.com](http://patchbox.com)

### ITEMS INCLUDED

- 24 x PATCHBOX 365 STP / UTP cassette with Cat.6 cable
- 1 x Frame
- 6 x Patchcatch
- 2 x DIN A5 tear-off ID Labels 96 Labels

### STP - SHIELDED VARIANTS

PRODUCT CODE	CABLE COLOR
P36STPXC6XX24K	Black
P36STPXC6XX24B	Blue
P36STPXC6XX24G	Green
P36STPXC6XX24R	Red
P36STPXC6XX24Y	Yellow
P36STPXC6XX24W	White

### UTP - UNSHIELDED VARIANTS

PRODUCT CODE	CABLE COLOR
P36UTPXC6XX24K	Black
P36UTPXC6XX24B	Blue
P36UTPXC6XX24G	Green
P36UTPXC6XX24R	Red
P36UTPXC6XX24Y	Yellow
P36UTPXC6XX24W	White

PATCHBOX

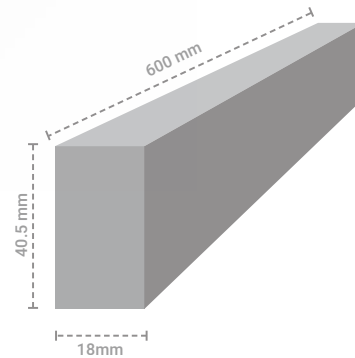
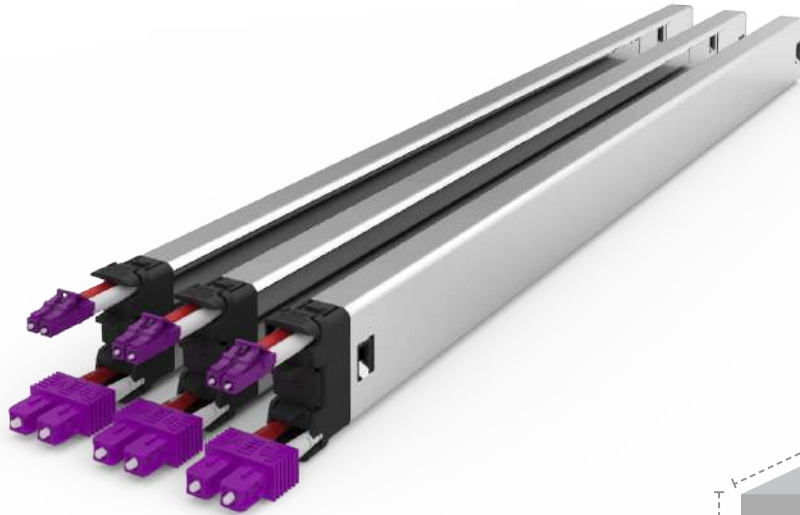
# PATCHBOX Plus<sup>+</sup>

PATCHBOX Simplify IT

Network with  
Confidence

5  
YEAR

WARRANTY



## PATCHBOX PLUS+ CASSETTES OS2 / OM4

### TECHNICAL SPECIFICATIONS

#### OS2 CABLE

OS2 RBS 9μ/125μ, G.657.A1, LSZH, Yellow

#### OM4 CABLE

OM4 RBS 50μ/125μ, LSZH, Erika Violet

#### CONNECTOR

LC Duplex - LC Duplex / LC Duplex - SC Duplex

#### EXTRACTABLE CABLE LENGTH

1.7m covers 26RU

#### CASSETTE PROFILES

Stainless steel, laser-welded

#### PLASTIC PARTS

Polyoxymethylene POM

#### OPERATING TEMPERATURE RANGE

+10°C - +45°C

#### AMBIENT HUMIDITY NON-CONDENSING

10% - 95%

#### GROSS WEIGHT

1.1kg

#### DIMENSIONS

18mm x 600mm x 40.5mm WxDxH

#### PACKAGING DIMENSIONS

95mm x 750mm x 66.5mm WxDxH

[patchbox.com](http://patchbox.com)

### ITEMS INCLUDED

3 x PATCHBOX Plus+ OS2 / OM4 cassette with  
LC-LC / LC-SC connector

### OS2 VARIANTS

PRODUCT CODE	CONNECTOR TYPE
C60SMAOS211X3Y	LC-LC
C60SMAOS212X3Y	LC-SC

### OM4 VARIANTS

PRODUCT CODE	CONNECTOR TYPE
C60MMAOM411X3E	LC-LC
C60MMAOM412X3E	LC-SC

PATCHBOX

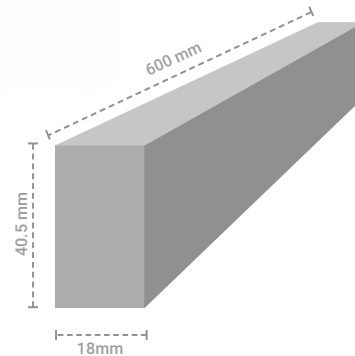
# PATCHBOX Plus<sup>+</sup>

PATCHBOX Simplify IT

Network with  
Confidence

5  
YEAR

WARRANTY



## PATCHBOX PLUS+ LONG RANGE CASSETTES - OS2 / OM4

### TECHNICAL SPECIFICATIONS

#### OS2 CABLE

OS2 RBS 9 $\mu$ /125 $\mu$ , G.657.A1, LSZH, Yellow

#### OM4 CABLE

OM4 RBS 50 $\mu$ /125 $\mu$ , LSZH, Erika Violet

#### CONNECTOR

LC Duplex - LC Duplex / LC Duplex - SC Duplex

#### EXTRACTABLE CABLE LENGTH

1.7m extractable / 1m over length non-retractable, covers 48RU from mid-mid

#### CASSETTE PROFILES

Stainless steel, laser-welded

#### PLASTIC PARTS

Polyoxymethylene POM

#### OPERATING TEMPERATURE RANGE

+10°C - +45°C

#### AMBIENT HUMIDITY NON-CONDENSING

10% - 95%

#### GROSS WEIGHT

1.2kg

#### DIMENSIONS

18mm x 600mm x 40.5mm WxDxH

#### PACKAGING DIMENSIONS

92mm x 700mm x 70mm WxDxH

[patchbox.com](http://patchbox.com)

### ITEMS INCLUDED

3 x PATCHBOX Plus+ OS2 / OM4 Long Range cassette with LC-LC / LC-SC connector

### OS2 VARIANTS

PRODUCT CODE	CONNECTOR TYPE
C60SMAOS21133Y	LC-LC
C60SMAOS21233Y	LC-SC

### OM4 VARIANTS

PRODUCT CODE	CONNECTOR TYPE
C60MMAOM41133E	LC-LC
C60MMAOM41233E	LC-SC

PATCHBOX

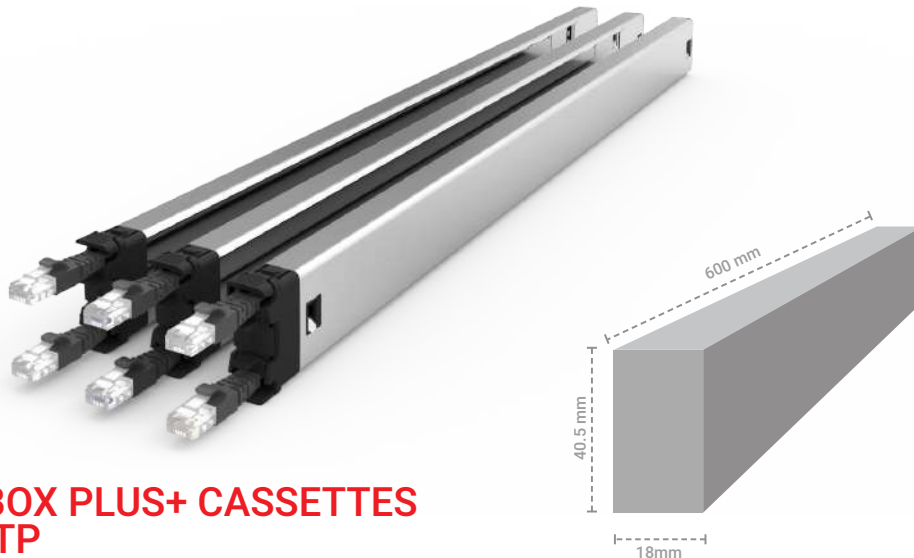
# PATCHBOX Plus<sup>+</sup>

PATCHBOX Simplify IT

Network with  
Confidence

5  
YEAR

WARRANTY



## PATCHBOX PLUS+ CASSETTES STP / UTP

### TECHNICAL SPECIFICATIONS

#### STP CABLE

Cat.6 STP shielded, 250MHz, AWG36,  
100% stranded copper, PVC jacket, 10Gbit ready

#### UTP CABLE

Cat.6 UTP unshielded, 250MHz, AWG30,  
100% stranded copper, PVC jacket, 10Gbit ready

#### CONNECTOR

RJ45 shielded plug, pins gold plated, snagless booted

#### EXTRACTABLE CABLE LENGTH

1.7m covers 26RU

#### CASSETTE PROFILES

Stainless steel, laser-welded

#### PLASTIC PARTS

Polyoxymethylene POM

#### OPERATING TEMPERATURE RANGE

+10°C - +45°C

#### AMBIENT HUMIDITY NON-CONDENSING

10% - 95%

#### GROSS WEIGHT

1.1kg

#### DIMENSIONS

18mm x 600mm x 40.5mm WxDxH

#### PACKAGING DIMENSIONS

95mm x 750mm x 66.5mm WxDxH

### ITEMS INCLUDED

3 x PATCHBOX Plus+ STP / UTP cassette with  
Cat.6 cable

### STP - SHIELDED VARIANTS

PRODUCT CODE	CABLE COLOR
C60STPXC6XXX3K	Black
C60STPXC6XXX3B	Blue
C60STPXC6XXX3G	Green
C60STPXC6XXX3R	Red
C60STPXC6XXX3Y	Yellow
C60STPXC6XXX3W	White

### UTP - UNSHIELDED VARIANTS

PRODUCT CODE	CABLE COLOR
C60UTPXC6XXX3K	Black
C60UTPXC6XXX3B	Blue
C60UTPXC6XXX3G	Green
C60UTPXC6XXX3R	Red
C60UTPXC6XXX3V	Yellow
C60UTPXC6XXX3W	White
C60UTPXC6XXX3Y	

[patchbox.com](http://patchbox.com)

PATCHBOX



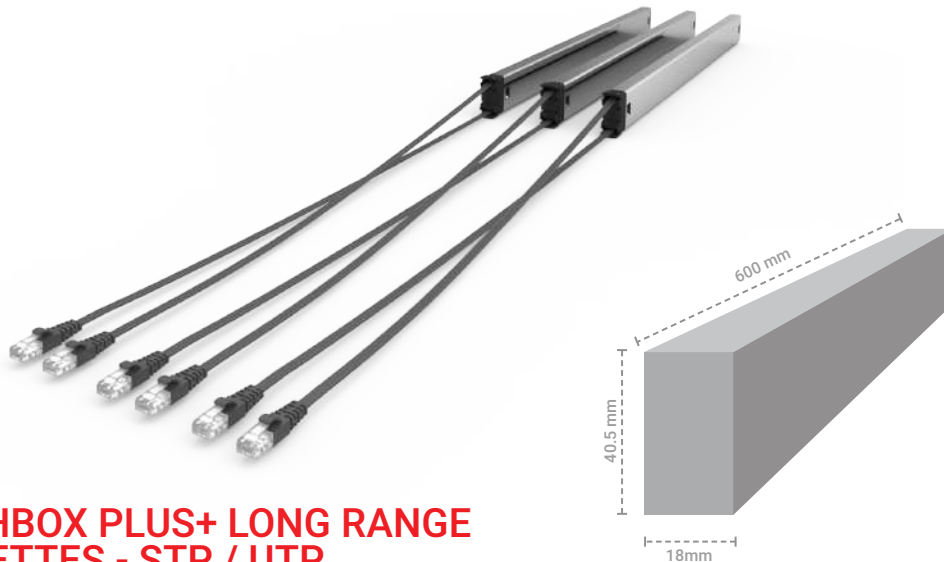
# PATCHBOX Plus<sup>+</sup>

PATCHBOX Simplify IT

Network with  
Confidence

5  
YEAR

WARRANTY



## PATCHBOX PLUS+ LONG RANGE CASSETTES - STP / UTP

### TECHNICAL SPECIFICATIONS

#### STP CABLE

Cat.6 STP shielded, 250MHz, AWG36,  
100% stranded copper, PVC jacket, 10Gbit ready

#### UTP CABLE

Cat.6 UTP unshielded, 250MHz, AWG30,  
100% stranded copper, PVC jacket, 10Gbit ready

#### CONNECTOR

RJ45 shielded plug, pins gold plated, snagless booted

#### EXTRACTABLE CABLE LENGTH

1.7m extractable / 1m over, length non-retractable, covers  
48RU from mid-mid

#### CASSETTE PROFILES

Stainless steel, laser-welded

#### PLASTIC PARTS

Polyoxymethylene POM

#### OPERATING TEMPERATURE RANGE

+10°C - +45°C

#### AMBIENT HUMIDITY NON-CONDENSING

10% - 95%

#### GROSS WEIGHT

1.2kg

#### DIMENSIONS

18mm x 600mm x 40.5mm WxDxH

#### PACKAGING DIMENSIONS

590mm x 760mm x 50mm WxDxH

[patchbox.com](http://patchbox.com)

### ITEMS INCLUDED

3 x PATCHBOX Plus+ STP / UTP  
Long Range cassette with Cat.6 cable

### STP - SHIELDED VARIANTS

PRODUCT CODE	CABLE COLOR
C60STPXC6XX33K	Black
C60STPXC6XX33B	Blue
C60STPXC6XX33G	Green
C60STPXC6XX33R	Red
CP60STPXC6XX33Y	Yellow
C60STPXC6XX33W	White

### UTP - UNSHIELDED VARIANTS

PRODUCT CODE	CABLE COLOR
C60UTPXC6XX33K	Black
C60UTPXC6XX33B	Blue
C60UTPXC6XX33G	Green
C60UTPXC6XX33R	Red
C60UTPXC6XX33Y	Yellow
C60UTPXC6XX33W	White

PATCHBOX

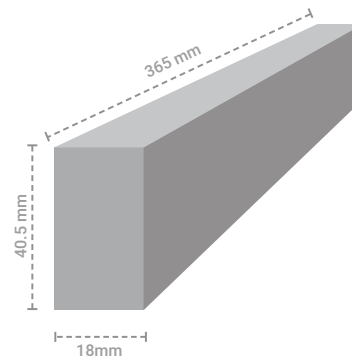
# PATCHBOX 365

PATCHBOX Simplify IT

Network with  
Confidence

5  
YEAR

WARRANTY



## PATCHBOX 365 CASSETTES STP / UTP

### TECHNICAL SPECIFICATIONS

#### STP CABLE

Cat.6 STP shielded, 250MHz, AWG36,  
100% stranded copper, PVC jacket, 10Gbit ready

#### UTP CABLE

Cat.6 UTP unshielded, 250MHz, AWG30,  
100% stranded copper, PVC jacket, 10Gbit ready

#### CONNECTOR

RJ45 shielded plug, pins gold plated, snagless booted

#### EXTRACTABLE CABLE LENGTH

0.8m covers 10RU

#### CASSETTE PROFILES

Stainless steel, laser-welded

#### PLASTIC PARTS

Polyoxymethylene POM

#### OPERATING TEMPERATURE RANGE

+10°C - +45°C

#### AMBIENT HUMIDITY NON-CONDENSING

10% - 95%

#### GROSS WEIGHT

0.83kg

#### DIMENSIONS

18mm x 365mm x 40.5mm WxDxH

#### PACKAGING DIMENSIONS W X D X H

92mm x 700mm x 70mm WxDxH

[patchbox.com](http://patchbox.com)

### ITEMS INCLUDED

3 x PATCHBOX 365 STP / UTP cassette with  
Cat.6 cable

### STP - SHIELDED VARIANTS

#### PRODUCT CODE

C36STPXC6XXX3K  
C36STPXC6XXX3B  
C36STPXC6XXX3G  
C36STPXC6XXX3R  
C36STPXC6XXX3Y  
C36STPXC6XXX3W

#### CABLE COLOR

Black  
Blue  
Green  
Red  
Yellow  
White

### UTP - UNSHIELDED VARIANTS

#### PRODUCT CODE

C36UTPXC6XXX3K  
C36UTPXC6XXX3B  
C36UTPXC6XXX3G  
C36UTPXC6XXX3R  
C36UTPXC6XXX3Y  
C36UTPXC6XXX3W

#### CABLE COLOR

Black  
Blue  
Green  
Red  
Yellow  
White

PATCHBOX

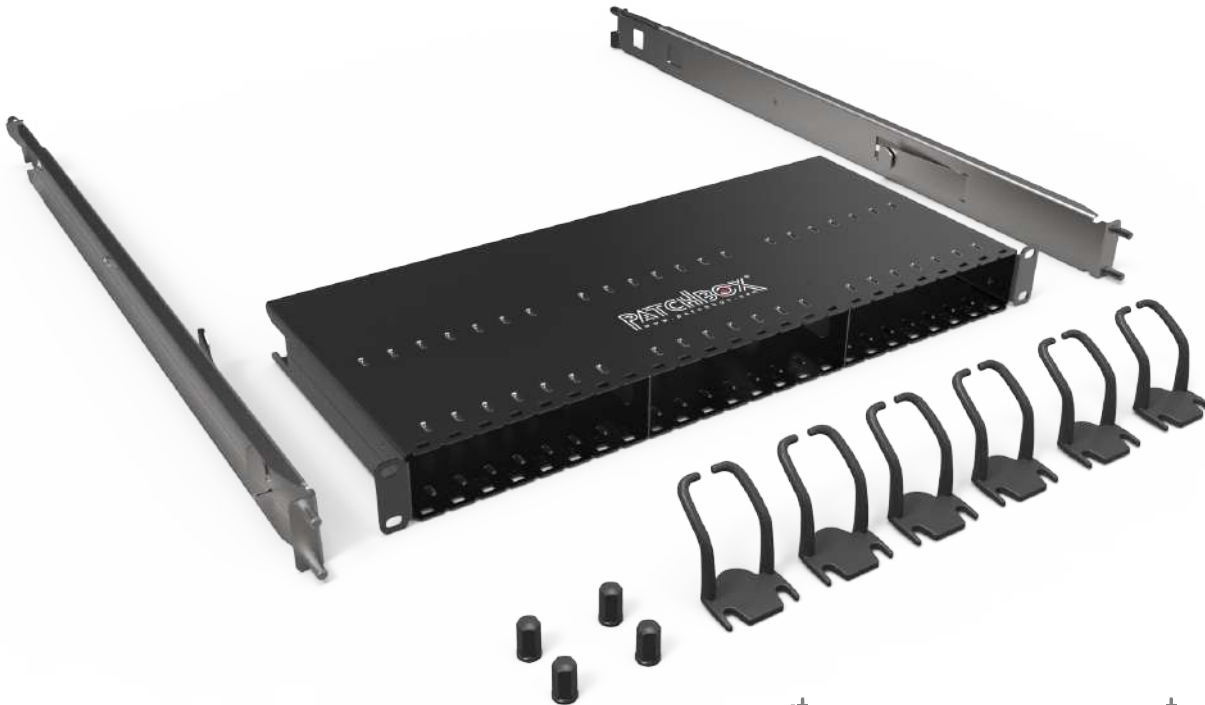
# PATCHBOX Plus<sup>+</sup>

PATCHBOX Simplify IT

Network with  
Confidence

5  
YEAR

WARRANTY



## PATCHBOX PLUS+ FRAME

### TECHNICAL SPECIFICATIONS

#### FRAME

RAL9005 powder coated steel

#### PLASTIC PARTS

Polyoxymethylene POM

#### OPERATING TEMPERATURE RANGE

+10°C - +45°C

#### AMBIENT HUMIDITY NON-CONDENSING

10% - 95%

#### GROSS WEIGHT

4.18kg

#### MOUNTING RAILS

Stainless Steel, 500mm to 850mm

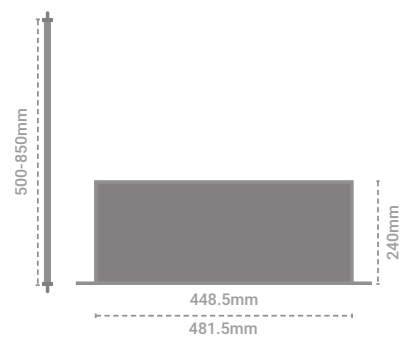
#### DIMENSIONS

481.5 - 448.5mm x 500 - 850mm x 50mm WxDxH

#### PACKAGING DIMENSIONS

590mm x 760mm x 50mm WxDxH

[patchbox.com](http://patchbox.com)



### ITEMS INCLUDED

- 1 x Frame
- 2 x Mounting rails incl. HEX-Nuts
- 6 x Patchcatch
- 2 x DIN A5 tear-off ID Labels 96 Labels

### PRODUCT CODE

PBXFRAME

PATCHBOX

# PATCHBOX 365

PATCHBOX Simplify IT

Network with  
Confidence

5  
YEAR

WARRANTY



## PATCHBOX 365 FRAME

### TECHNICAL SPECIFICATIONS

#### FRAME

RAL9005 powder coated steel

#### PLASTIC PARTS

Polyoxymethylene POM

#### MOUNTING RAILS

Stainless Steel, 500mm to 850mm from 19" rail to 19" rail

#### OPERATING TEMPERATURE RANGE

+10°C - +45°C

#### AMBIENT HUMIDITY NON-CONDENSING

10% - 95%

#### GROSS WEIGHT

3.15kg

#### DIMENSIONS

481.5 - 448.5mm x 240mm x 50mm WxDxH

#### PACKAGING DIMENSIONS

590mm x 760mm x 50mm WxDxH

#### PRODUCT COMPLIES WITH ROHS AND CE

#### MADE IN THE EU

[patchbox.com](http://patchbox.com)

### ITEMS INCLUDED

- 1 x Frame
- 6 x Patchcatch
- 2 x DIN A5 tear-off ID Labels 96 Labels

### STP SHIELDED VARIANTS

PBXFRAME365

PATCHBOX

# SETUP.EXE

PATCHBOX Simplify IT

Network with  
Confidence

**LIFE  
TIME**  
WARRANTY



## SETUP.EXE

### DESCRIPTION

---

The SETUP.EXE is a problem solving miracle designed by Network Engineers. Through its ingenious design, one person is able to do the work of two people when setting up a network cabinet. You are able to support up to 15kg while you fix everything into place. Simply mount it upside down and the equipment slides in easily. Use it as a table for your laptop or while terminating patch panels. It also carries your most important tools like a screwdriver, spare cage nuts, cable ties and so on and is mounted within 3 seconds. The Setup.exe is the ultimate tool for everyone working on network cabinets!

### TECHNICAL SPECIFICATIONS

---

#### DIMENSIONS FOLDED

55mm x 460mm x 45mm WxDxH

#### DIMENSIONS OPENED

482.6mm x 380mm x 45mm WxDxH

#### MATERIALS

Aluminium, Stainless steel, powder coated steel

#### GROSS WEIGHT

0.88kg

#### PACKAGING DIMENSIONS

60mm x 510mm x 55mm WxDxH

[patchbox.com](http://patchbox.com)

### ITEMS INCLUDED

---

1 x SETUP.EXE

### PRODUCT CODE

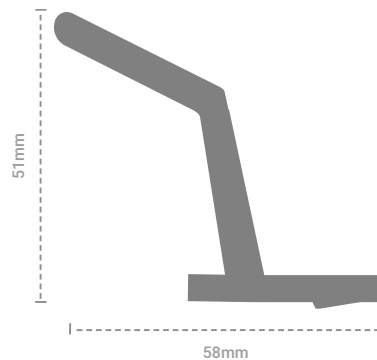
---

PBXEXE

PATCHBOX

# PATCHBOX Patchcatch

PATCHBOX Simplify IT



## PATCHBOX Patchcatch

### DESCRIPTION

Our innovative cable organizer with zero rack units - the Patchcatch 0RU - can simply be mounted under the mounting brackets of switches and patch panels. Compared to conventional horizontal cable management it does not take any additional space in a network cabinet. All patch cords - Cat6 and fibre optics - are guided to the side of the RU and are patched to keep the cabinet nice and tidy. No more cable spaghetti! The Patchcatch works with conventional patch cords as good as with the PATCHBOX. A great alternative to conventional cable management. Every PATCHBOX System as well as PATCHBOX Frame includes 6 Patchcatches.

### TECHNICAL SPECIFICATIONS

#### PLASTIC PARTS

Polyoxymethylene POM

#### OPERATING TEMPERATURE RANGE

+10°C - +45°C

#### AMBIENT HUMIDITY NON-CONDENSING

10% - 95%

#### WEIGHT

0.06kg

#### PACKAGING DIMENSIONS

95mm x 102mm x 40mm WxDxH

### ITEMS INCLUDED

4 x Patchcatch

### PRODUCT CODE

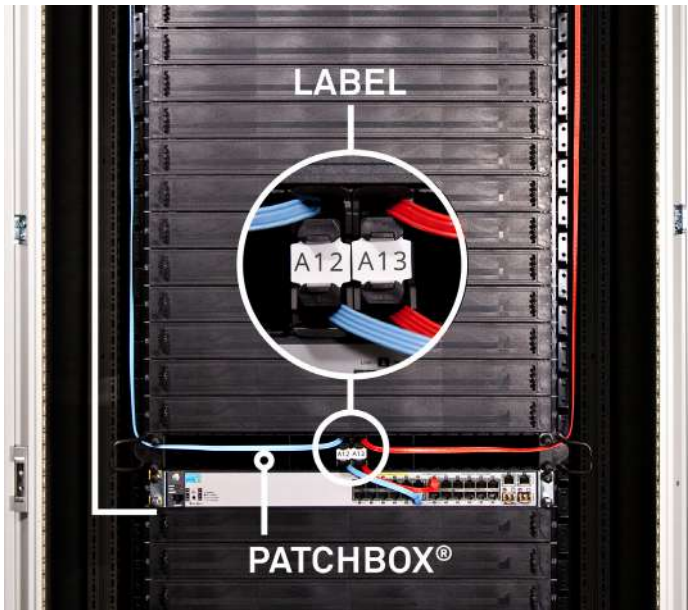
PBCX8K

[patchbox.com](http://patchbox.com)

PATCHBOX

# PATCHBOX ID Labels

PATCHBOX Simplify IT



## PATCHBOX ID LABELS

### DESCRIPTION

The ID Labels are simply slid onto the cable stopper on the cassette. When the PATCHBOX is mounted above or underneath a switch you already have a logical assignment of the cassettes to the switch ports. With the patch panel port written on the ID Label you see all your connections with an blink of the eye.

### TECHNICAL SPECIFICATIONS

#### WEIGHT

0.02kg

#### PACKAGING DIMENSIONS

160mm x 235mm x 20mm WxDxH

### ITEMS INCLUDED

2 x DIN A5 tear-off ID Labels 96 Labels

### PRODUCT CODE

IDLABELW

[patchbox.com](http://patchbox.com)

PATCHBOX

# PATCHBOX **Blind Panel**

PATCHBOX Simplify IT



## PATCHBOX Blind Panel

### DESCRIPTION

---

The Blind Panels can be used to cover up unused slots from your PATCHBOX Plus+. This ensures air circulation within your cabinet remains optimised and keeps cool what needs to be kept cool. Simply clip them into the frame and reuse them anytime in another slot.

### TECHNICAL SPECIFICATIONS

---

#### PLASTIC PARTS

Polyoxymethylene POM

#### OPERATING TEMPERATURE RANGE

+10°C - +45°C

#### AMBIENT HUMIDITY NON-CONDENSING

10% - 95%

#### WEIGHT

0.06kg

#### PACKAGING DIMENSIONS

95mm x 102mm x 40mm WxDxH

### ITEMS INCLUDED

---

10 x Blind Panels

### PRODUCT CODE

---

PBXBLIND

[patchbox.com](http://patchbox.com)

PATCHBOX